

Miss Margaret Stevenson, a delightful companion of my wife and myself on all of our collecting trips during the spring of 1961, and a very great help to us during the bizarre maneuvers which were required in order to net this most elusive and beautiful insect.

#### REFERENCES

- Bird, R. D., 1933. *Somatochlora ozarkensis*, a new species from Oklahoma (Odonata: Cordulinae). Occ. Papers Mus. Zool. Univ. Mich., no. 261.
- Walker, E. M., 1925. The North American dragonflies of the genus *Somatochlora*. Univ. of Toronto Studies, Biol. Ser., no. 26.
- Williamson, E. B. and Gloyd, L. K., 1933. A new *Somatochlora* from Florida (Odonata-Cordulinae). Occ. Papers Mus. Zool. Univ. Mich., no. 262.
- 

### A NEW SPECIES OF MALLOPHAGA FROM NEW GUINEA

K. C. EMERSON, *Stillwater, Oklahoma*

In a small collection of Mallophaga received for determination from the Bernice P. Bishop Museum was a series from a New Guinea Wallaby which apparently represents a new species. That form is herewith described and illustrated.

#### *Heterodoxus maai*, new species

*Holotype male*.—General shape and chaetotaxy as shown in figure 1. Male genitalia, minus genital sac, as shown in figure 3. The male genital sac is without heavy spines found in *Heterodoxus longitarsus* (Piaget, 1880) as illustrated by Werneck (1941). Thoracic sternal plates with fewer setae, and the abdominal sternites with more setae than in *Heterodoxus forcipatus* (Mjöberg, 1919) as illustrated by Werneck (1948). The heavy spines on the prothorax are not found on *Heterodoxus spiniger* (Enderlein, 1909). In addition to differences in chaetotaxy, the male genitalia are distinctive. Total length, 3.47 mm.

*Allotype female*.—General shape and chaetotaxy, except for terminal abdominal segments, as in the male. Terminal abdominal segments as shown in figure 2. Total length, 3.45 mm.

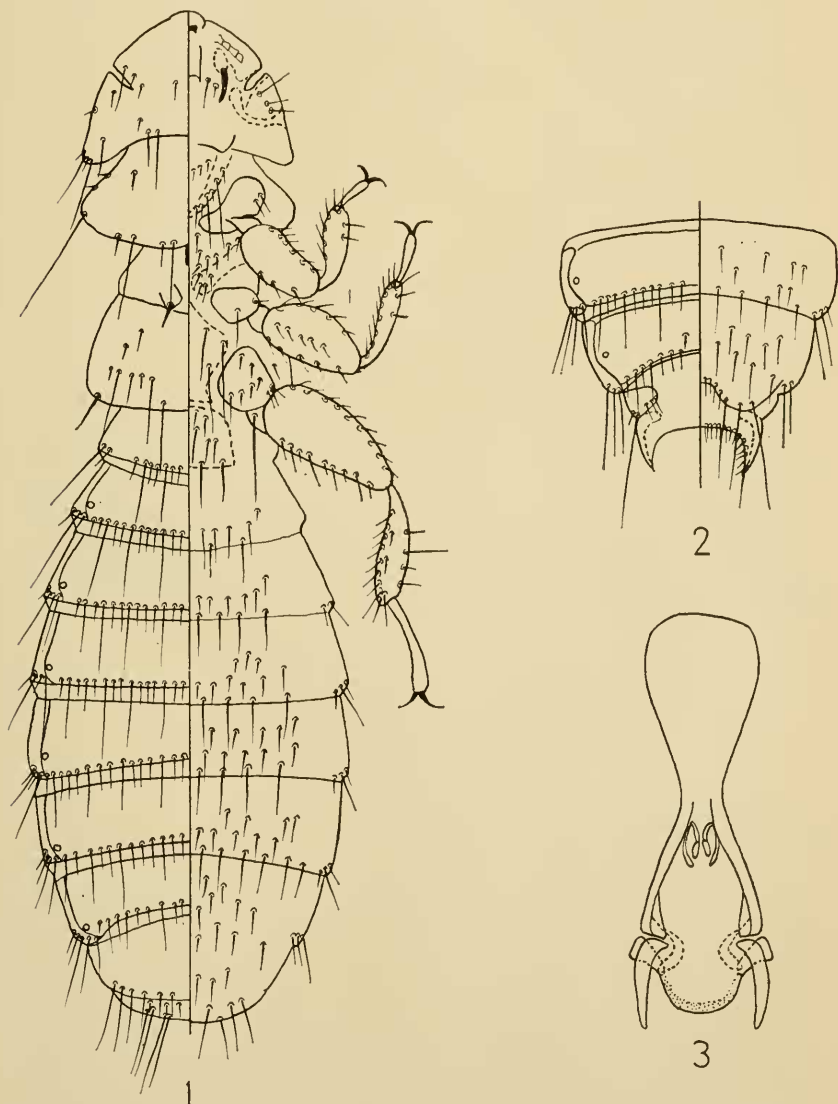
*Type host*.—*Dorcopsis veterum* (Lesson, 1826).

*Type material*.—Holotype male, allotype female and paratypes of both sexes collected by T. C. Maa at Eramboe, Netherlands New Guinea on November 2, 1960. The Bernice P. Bishop Museum number is TMP 2052. The host skin is presently in the American Museum of Natural History (AMNH 193156) and was identified by H. M. Van Deusen.

*Discussion*.—This species is unusual in that it is the only known species of *Heterodoxus* with the antennae completely concealed inside lateral indentations. The dorsal and ventral surfaces of these indentations are of equal expansion. This is the first record of Mallophaga from this genus of host.

LITERATURE CITED

- Werneck, F. L., 1941. De um estranho parasito do Cao (Insecta, Mallophaga).  
 Rev. Brasil. Biol., 1: 47-55.  
 ———, 1948. Os Malofagos de Mamiferos Parte I: Amblycera e Ischnocera  
 (Philopteridae e parte de Trichodectidae). Rio de Janeiro.



*Heterodoxus maui*, n. sp. Fig. 1, dorsal-ventral view of holotype male; fig. 2, dorsal-ventral view of terminal abdominal segments of allotype female; fig. 3, male genitalia. All figures are drawn to the same scale.